



PERIOTHEUS

Manage Your Energy Flows

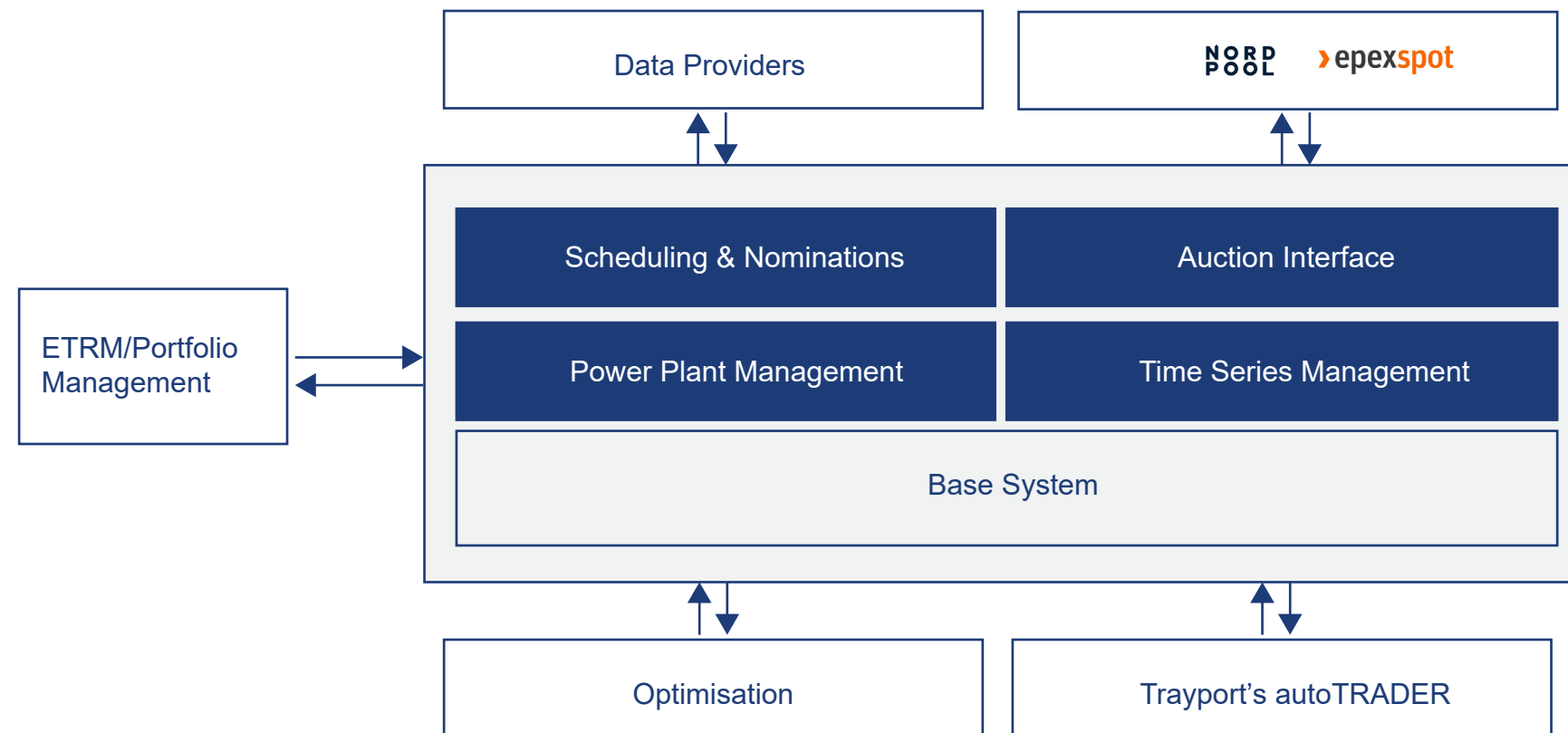
TMX TRAYPORT

Periotheus

Supporting automation of energy tasks, power scheduling & gas nominations through one customisable platform



Periotheus is a fully integrable and customisable system assisting you with automation of a variety of energy management tasks. From placing auction bids, managing time series to scheduling and nomination duties, among other functions, on a failsafe infrastructure.



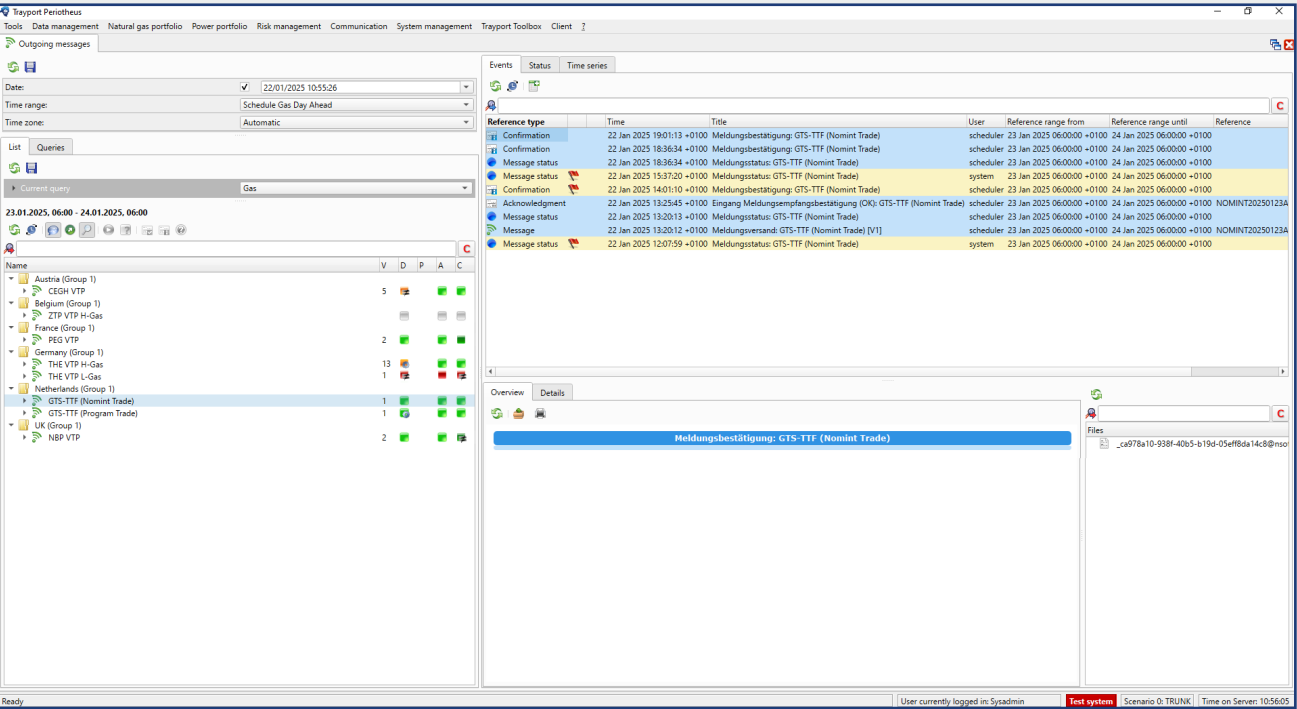
Key Features

- Scheduling and Nomination
- Auction Interface
- Time Series Management
- Integrated Development Environment
- Power Plant Management

It is designed to manage your energy operations including scheduling, nominations, auction workflows and trading activities for physical power and gas markets. The integrated system can be personalised to your energy-related tasks within your current system or a new environment.

Scheduling and Nomination

> Easy access to most common European markets.
Managing various nomination formats and communication data through one platform.



Graphic data processing and intuitive traffic light visualisation

Serves as a central data hub for various types of market-related communication and messages from processes related to the energy industry

Can be automated to any level and is fully customisable

Auction Interface

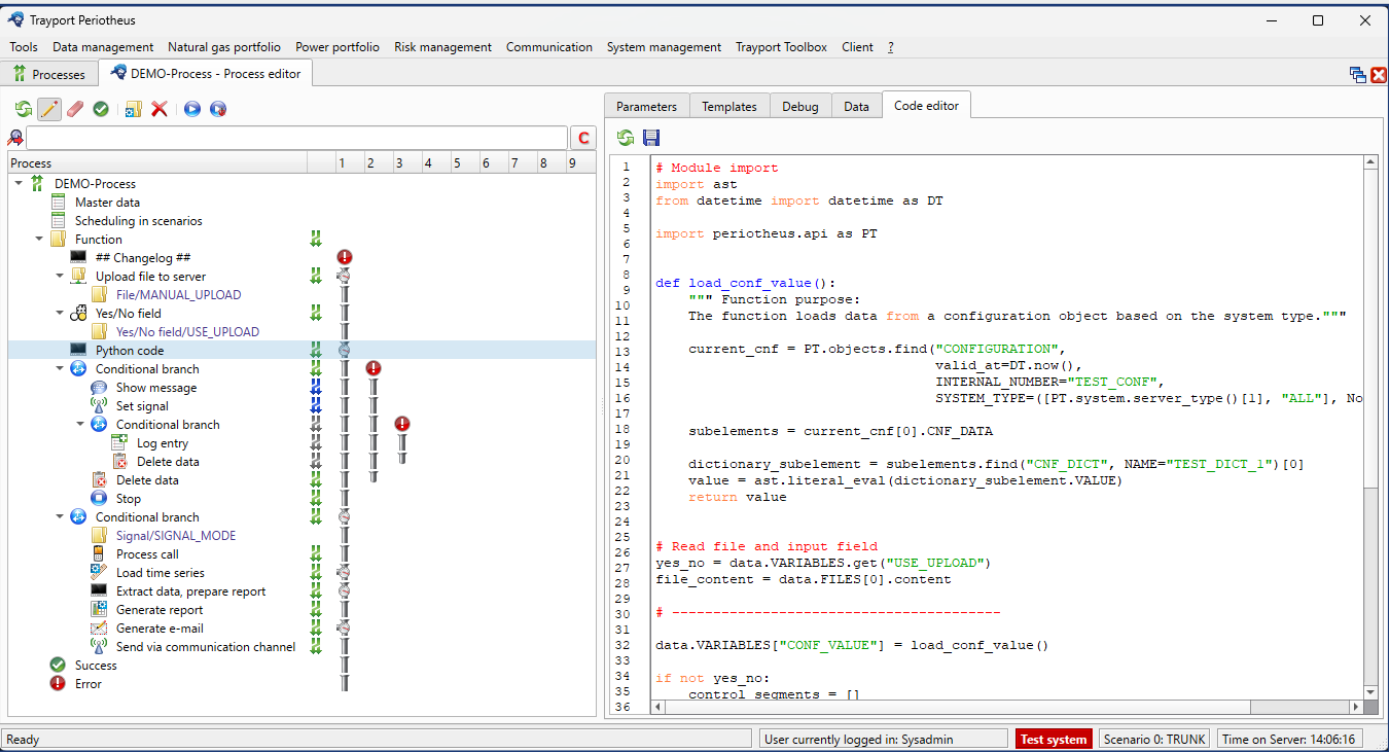
> Automate your day-ahead and intraday bidding process on EPEX SPOT and Nord Pool for European markets.

The Periotheus Auction interface streamlines the processes of generating bids, validating them, tracking results, and integrating data, while supporting market resolutions on an hourly, half-hourly, and 15-minute basis.

Easily manage complex portfolios and bid matrices by using various order types, such as single orders, block orders or exclusive groups, allowing for flexibility and precision in bidding across different portfolio segments.

Integrated Development Environment

Periotheus provides an integrated development environment which can enhance the system with customised functions and own-written Python code. To achieve this, users can create processes, commonly known as workflows, which are executed based on time or event triggers, performing specified actions within the system.



Power Plant Management

Manage your Power Plant with a high level of detail

Our power plant management solution allows you to display the structure of a complete power plant structure, down to each unit, and to fully automate the use of resulting data. Periotheus supports a range of power plant types, from renewables to fossil fuels; it can be integrated into your own systems or alongside Periotheus.

Time Series Management

Periotheus Time Series Management is a robust system for saving, processing, and evaluating time series in various granularity from one minute to a year. The system efficiently manages hundreds of time series with optimal performance. While being extremely flexible, it offers an extensive range of functions and the ability to customise them.



Contact Us To See How You Can Benefit

Email:

clientmanagertraders@trayport.com
sales@trayport.com

Tel:

+44 (0) 20 7960 5511



info@trayport.com

www.trayport.com



United Kingdom
Austria
Germany
Singapore (Asia Pacific)

Trayport Limited, 3rd Floor, 2 Gresham St, London, EC2V 7AD, United Kingdom

Trayport Austria GmbH, Euro Plaza 2E / 1 OG, Technologiestraße 10, 1120 Wien, Austria

Trayport Germany, GmbH, Linzer Straße 11, 28359 Bremen, Germany

Trayport Pte Ltd, One Raffles Place, Office Tower 1, #31-02, Singapore, 048616

+44 (0)20 7960 5500

+43 1 6092290

+49 (0) 421 2010 90

+65 6411 4700

Trayport Limited is registered in England and Wales (Registered No. 02769279) 3rd Floor, 2 Gresham St, London, EC2V 7AD

Any trading activity is conducted with the specific trading venue. Trayport is a software provider of trading solutions and is not a trading venue. Trayport does not arrange investments or provide investment advice.